

Long Rail Connection Method

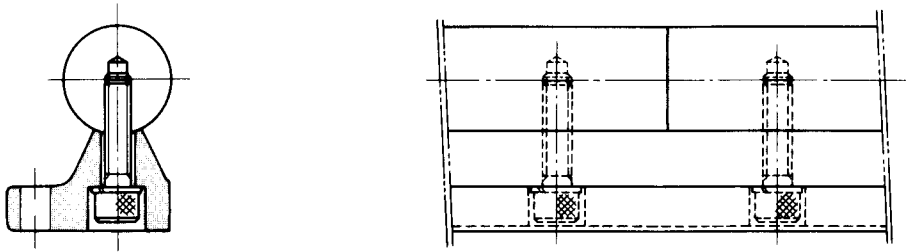


Fig. 28

In case a long rail say, 10 meters in length, is required, a widely accepted method is to use several rail joints in the overall length. The detailed extension method for **QZAK** linear guides, as shown in Fig. 28, is best-suited for long rail joints. Both round shafts are installed on a supporting block after making sure that the block's joints are not right under any shaft-coupled points. The shafts are then each anchored by bolts. The shafts can be automatically aligned afterwards leaving no offsets at the shaft's joints.