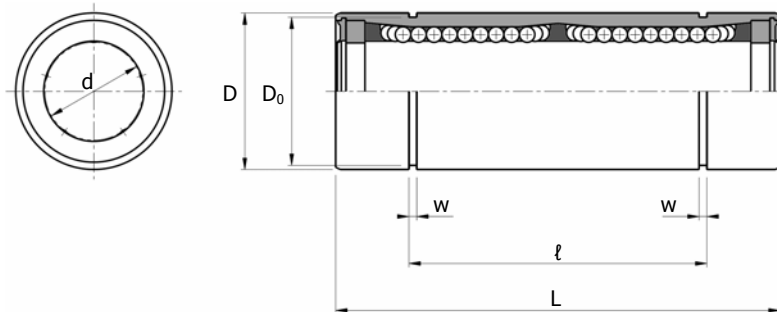


**Table 2: L series**

unit: mm

Model Number		Major Dimensions						Basic Load Ratings (N)	
Standard	Rustproof	d	D	L	l	w	D <sub>0</sub>	C	C <sub>0</sub>
L6MF	ML6MF	6	12 <sup>0</sup>	26	13.5	1.1	11.5	218	160
L8MF	ML8MF	8	15 <sup>-0.011</sup>	31	17.5	1.1	14.3	258	220
L10MF	ML10MF	10	19 <sup>0</sup>	38 <sup>0</sup>	22	1.3	18.0	532	430
L12MF	ML12MF	12	21 <sup>0</sup>	39 <sup>-0.2</sup>	23	1.3	20.0	549	430
L16MF	ML16MF	16	28 <sup>-0.013</sup>	48	26.5	1.6	26.6	768	650
L20MF	ML20MF	20	32 <sup>0</sup>	53	30.5	1.6	30.3	1282	1010
L25MF	ML25MF	25	40 <sup>0</sup>	70 <sup>0</sup>	41	1.85	38.0	2164	1790
L30MF	ML30MF	30	45 <sup>-0.010</sup>	75 <sup>-0.3</sup>	44.5	1.85	43.0	3245	2510



**Table 3: LD series**

unit: mm

Model Number		Major Dimensions						Basic Load Ratings (N)	
Standard	Rustproof	d	D	L	l	w	D <sub>0</sub>	C	C <sub>0</sub>
LD6MF	MLD6MF	6	12 <sup>0</sup>	42	27	1.1	11.5	354	310
LD8MF	MLD8MF	8	15 <sup>-0.013</sup>	52	35	1.1	14.3	419	450
LD10MF	MLD10MF	10	19 <sup>0</sup>	64 <sup>0</sup>	44 <sup>0</sup>	1.3	18.0	865	850
LD12MF	MLD12MF	12	21 <sup>0</sup>	66 <sup>-0.3</sup>	46 <sup>-0.3</sup>	1.3	20.0	892	860
LD16MF	MLD16MF	16	28 <sup>-0.016</sup>	79	53	1.6	26.6	1248	1300
LD20MF	MLD20MF	20	32 <sup>0</sup>	91	61	1.6	30.3	2083	2020
LD25MF	MLD25MF	25	40 <sup>0</sup>	123 <sup>0</sup>	82 <sup>0</sup>	1.85	38.0	3517	3570
LD30MF	MLD30MF	30	45 <sup>-0.010</sup>	133 <sup>-0.4</sup>	89 <sup>-0.4</sup>	1.85	43.0	5273	5010