

Standard Supporter Dimensions

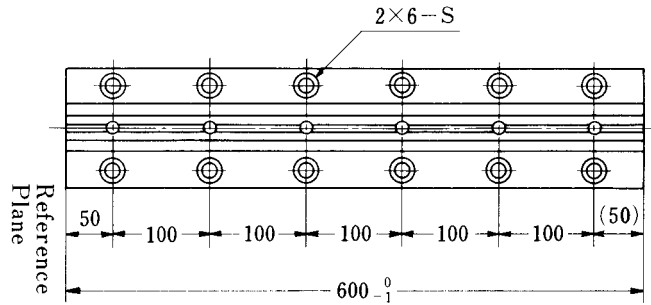


Fig. 23;

Maximum Guide Rail Length

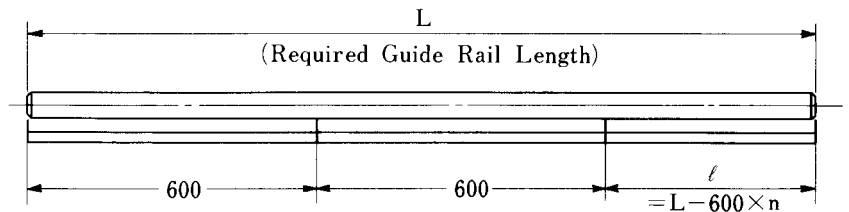


Fig. 24;

Table 85 : Maximum Guide Rail Length; mm

Model No.	Lmax
G-20R	2000
G-25R	3000
G-30R	3000

Long Rail Connection Method

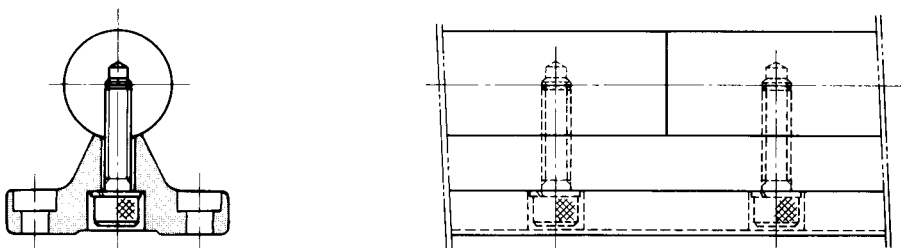


Fig. 25;

In case a long rail say, 10 meters in length, is required, a widely accepted method is to use several rail joints in the overall length. The detailed extension method for QZAK linear guides, as shown in Fig. 25, is best-suited for long rail joints. Both round shafts are installed on a supporting block after making sure that the block's joints are not right under any shaft-coupled points. The shafts are then each anchored by bolts. The shafts can be automatically aligned afterwards leaving no offsets at the shaft's joints.